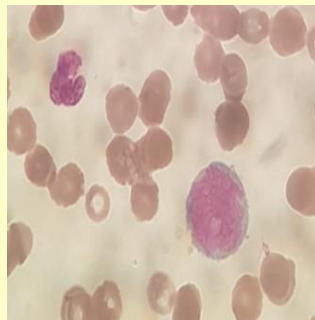
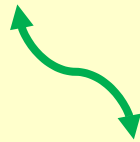
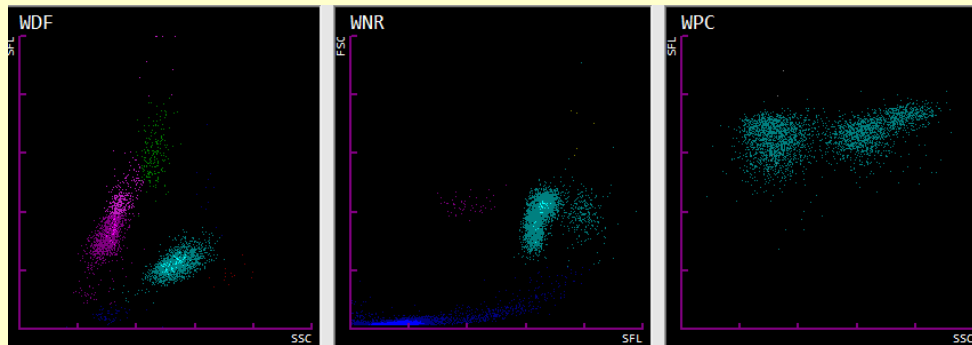




## **PREMIO Karl Landsteiner 2021**

**PRIMO POSTO:**

### **DIAGNOSI EMOMETRICA DI LABORATORIO IN UN CASO DI MIELODISPLASIA: IL RUOLO DEL LABORATORIO**



*Modafferi B. , Latella V. Oliva E.*

*U.O.C. Laboratorio Analisi G.O.M. Reggio Calabria*

*U.OC. Ematologia G.O.M. Reggio Calabria*